



开窗机电机 DJ54DS 说明书

52-4-5

技

技术支持

可适配的机械开关

Single-Channel
mechanic switch
单通道机械开关



DC25

Rebound Single-Channel
mechanic switch
可反弹单通道机械开关



DC29

Single-Channel
mechanic switch
单通机械开关



DC27

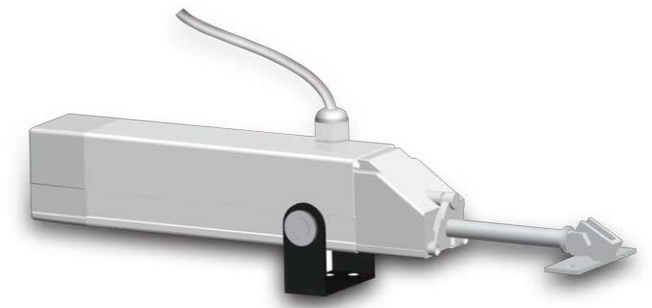


Mechanical limit Limit
机械行程限位



DJ54DS 推窗器

产品说明书



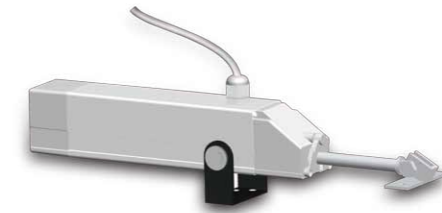
版本：A/00

技

产品特点

技术支持

- 输入电压：DC24V
- 工作温度：-10℃~55℃
- 电机内置过载、过流保护装置
- 寿命可达10000次开合动作
- 防护等级IP55



参数说明： **DJ** **54** **DS** -- **450** / **200**

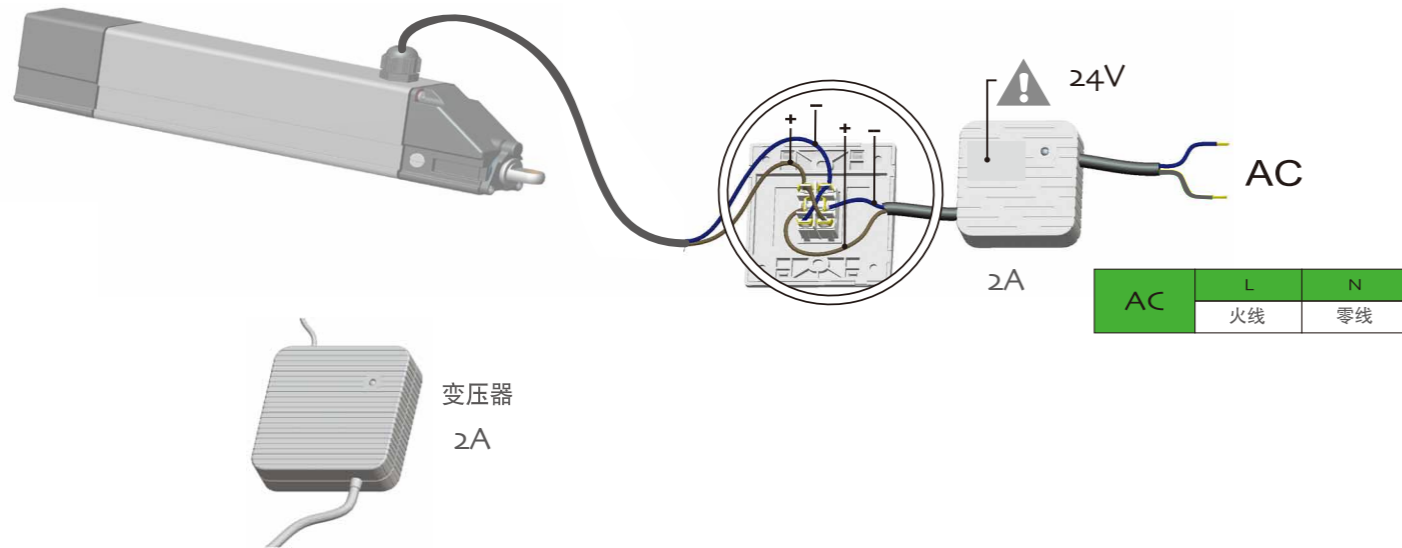
开窗机 电机 直流 推力/拉力 行程
外型代号 标准型 (N) (mm)

技

技术支持

接线方式

⚠ 电机电源线：棕色是正极
蓝色是负极



注意事项



Hung window
上悬窗



Hopper window
下悬窗



电动推窗器不能装在不平整的地方

技

技术支持

安装示意



用螺丝将支架固定在窗户上

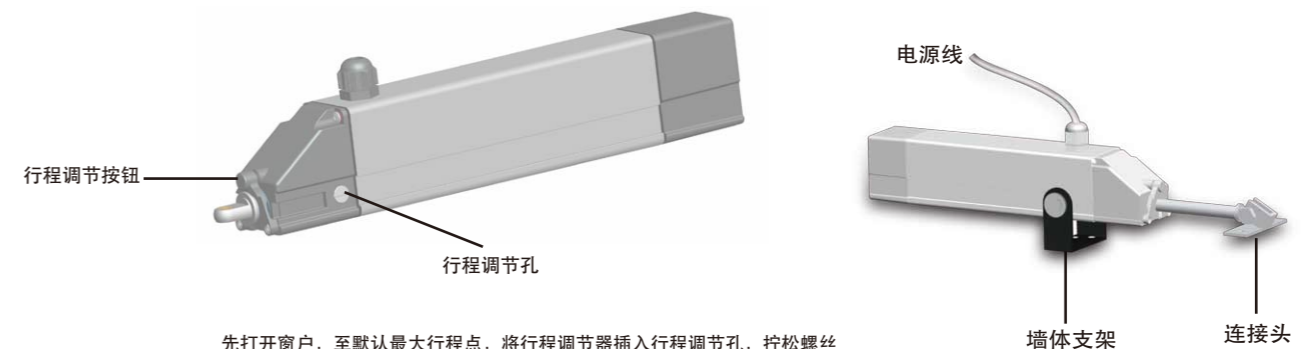


用接头连接链条和窗户

技

技术支持

电机说明



先打开窗户，至默认最大行程点，将行程调节器插入行程调节孔，拧松螺丝
关闭窗户，再次打开窗户至所需角度，按行程调节按钮，电机停止，用行程
调节器将螺丝拧紧，行程设置完成。
如果未设定行程，电机将运行至默认行程；



Technical Support

Applicable mechanical switch

Single-Channel mechanic switch



DC25

Rebound Single-Channel mechanic switch



DC29

Single-Channel mechanic switch

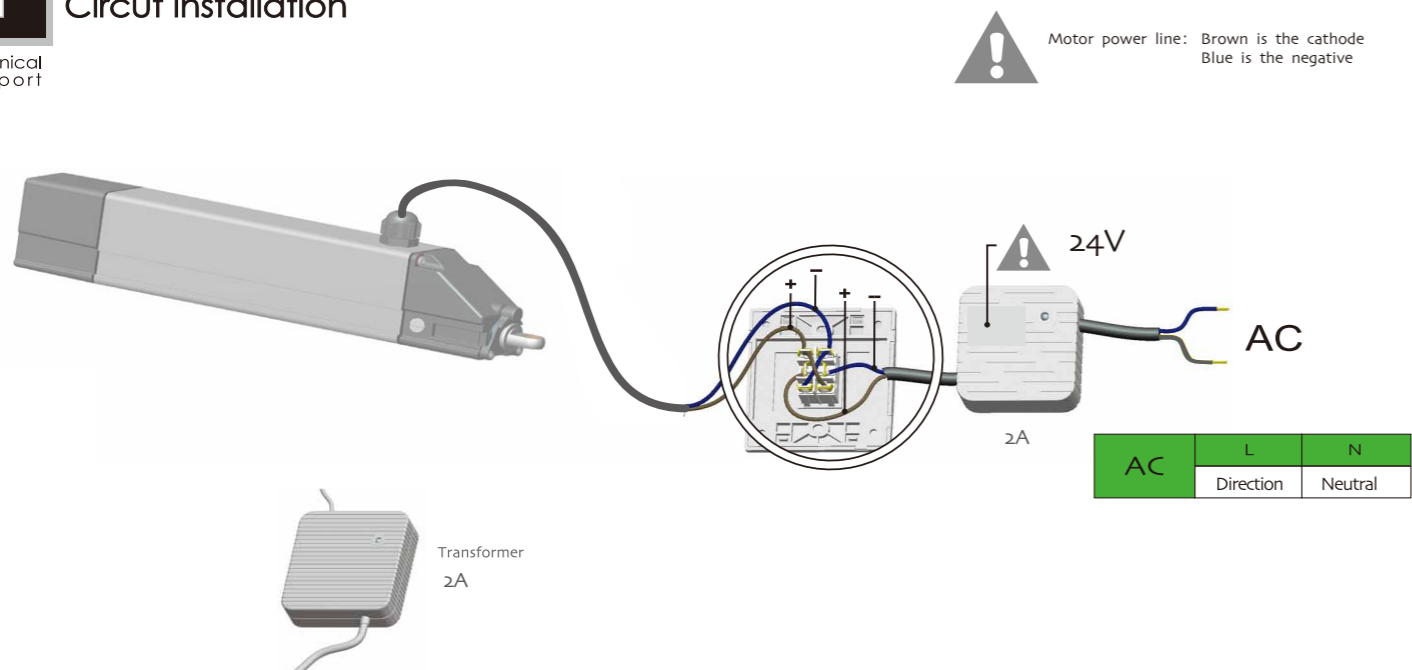


DC27

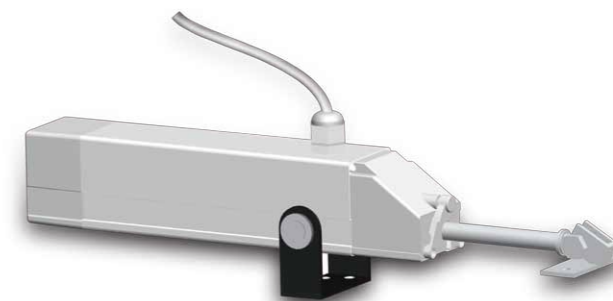


Technical Support

Circuit installation



Mechanical limit Limit



DJ54DS Window Opened Motor

Specification

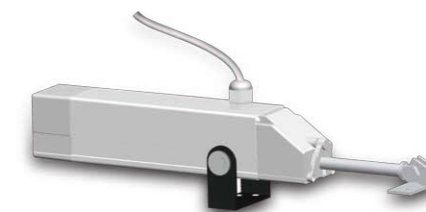
Version No.: A/00



Technical Support

Product features

- input voltages: DC24V
- Working temperature: -10°C~55°C
- Motor with built-in overload and over-current protector
- The lifetime can reach 10000 times for opening and closing movement
- Protection degree: IP55



Tubular Motor Nameplate:

DJ 54 DS -- 450 / 200

Window Opener The code of motor DC standard motor push/Pull Force (N) Running Trip (mm)



Attention



motorized window opened can not be put it into uneven place



Hung window



Hopper window



Technical Support

installation drawing



fix bracket on window used screw

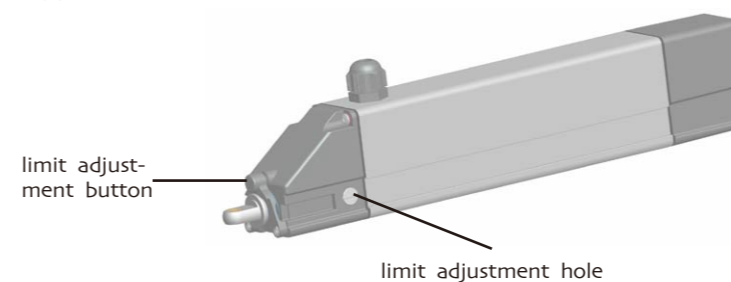


connect chain and window used connector



Technical Support

Motor specification



open the window to the maximum limit, insert the limit adjuster into adjustment hole, loosen the screw, open the window to the desired angle, press limit adjusting button, motor stops, tighten the screw, the limit set is done. unset the limit, the motor will operate to the original limit.

